

Neurophysiology electrodes & accessories 2019 catalogue



Heerlen, January 2019.

Dear customer,

In front of you is the 2019 short form catalogue with a selective range of high-end EEG/EMG products and accessories that MFI manufactures.

Beside of the products in this catalogue we design, manufacture and package all kind of cables and physiologic electrodes for OEM customers. Our products are made in The Netherlands in compliance with our ISO13485:2016 quality system. We therefore can guarantee you a 100% problem free use and assure satisfied end-users.

Note:

Although we know that these products are also offered by other parties, we have found that the price/quality ratio is often not in balance.

MFI will never compromise on quality to gain higher margins, instead we put our expertise and knowledge into a better product ensuring that the end-user is satisfied.

More information about MFI and what we can do for you is to be found here: www.mfi-bv.nl

If you need a product that is not listed in this overview, or you are a manufacturer of physiological recorders/amplifiers and seeking customized products, please send us an email at: sales@mfi-bv.nl
Our sales department will contact you to see how we can establish a long term business relation that will benefit both sides.

Beside Dutch we speak fluently English and German.

Kind regards,

Ronald de Vreeze
Managing Director MFI bv



Jan Campertstraat 7 / Unit 0.9
6416SG Heerlen / The Netherlands
P: +31-(0)45-8500434
E: info@mfi-bv.nl
W: www.mfi-bv.nl (multi lingual)

Content	Page
• Reusable EEG disc electrodes silicon lead	4
• Reusable EEG disc electrodes tinsel lead	5
• Reusable Earclip electrodes	6
• Bio & Neuro feedback electrodes	6
• Disposable EEG disc electrodes	7
• BrainWave EEG Head cap system	8-9
• Reusable Ring Electrodes	10
• Reusable Felt tip & Felt bar electrodes	11
• EMG Cables	12-13
• Tremor sensor PMS & MMS	14
• OEM products	15

Durable* long lasting EEG disc electrodes in 6mm and 10mm cup size. Cup is available in Silver (Ag), Gold (Ag/Au**), Silver/Silver-Chloride (Ag/AgCl) and Tin (Sn).

Supplied with "Tangle free" silicon lead wire offering problem free daily high-volume EEG recordings. Lead wires available in 6 different colours with a minimum length of 15cm and terminated to Touch Proof (DIN42802 style) connectors. **These electrodes are autoclavable.**

* MFi cast its own silver electrodes from 99,95% silver to ensure maximum quality. Cast electrodes last longer as stamped electrodes due to sturdy design.
 ** Plated with 5 microns 24Karat gold.

10mm Cup electrodes, silicon lead, Touch Proof plugs (DIN42802)

10 or 25 electrodes per pkg					
Lead color: ●●●●● (2x or 5x)					
Electrode material	Lead (M)	Part Number	Qty/ Pkg	Part Number	Qty/ Pkg
Silver	1.0	1112J.100TP	10	1112Y.100TP	25
Silver	1.5	1112J.150TP	10	1112Y.150TP	25
Silver	2.0	1112J.200TP	10	1112Y.200TP	25
Gold	1.0	1132J.100TP	10	1132Y.100TP	25
Gold	1.5	1132O.150TP	10	1132Y.150TP	25
Gold	2.0	1132O.200TP	10	1132Y.200TP	25
Chloride	1.0	1122O.100TP	10	1122Y.100TP	25
Chloride	1.5	1122O.150TP	10	1122Y.150TP	25
Chloride	2.0	1122O.200TP	10	1122Y.200TP	25
Tin	1.0	1162O.100TP	10	1162Y.100TP	25
Tin	1.5	1162O.150TP	10	1162Y.150TP	25
Tin	2.0	1162O.200TP	10	1162Y.200TP	25

Silver (Ag)



Gold (Ag/Au)



Silver-Chloride (Ag/AgCl)



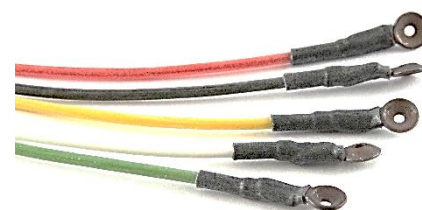
Pure tin (Sn)



12 or 24 electrodes per pkg					
Lead color: ●●●●●● (2x or 4x)					
Electrode material	Lead (M)	Part Number	Qty/ Pkg	Part Number	Qty/ Pkg
Silver	1.0	1112L.100TP	12	1112P.100TP	24
Silver	1.5	1112L.150TP	12	1112P.150TP	24
Silver	2.0	1112L.200TP	12	1112P.200TP	24
Gold	1.0	1132L.100TP	12	1132P.100TP	24
Gold	1.5	1132L.150TP	12	1132P.150TP	24
Gold	2.0	1132L.200TP	12	1132P.200TP	24
Chloride	1.0	1122L.100TP	12	1122P.100TP	24
Chloride	1.5	1122L.150TP	12	1122P.150TP	24
Chloride	2.0	1122L.200TP	12	1122P.200TP	24
Tin	1.0	1162L.100TP	12	1162P.100TP	24
Tin	1.5	1162L.150TP	12	1162P.150TP	24
Tin	2.0	1162L.200TP	12	1162P.200TP	24

6mm Cup electrodes, silicon lead, Touch Proof plugs (DIN42802)

10 or 25 per pkg					
Lead color: ●●●●● (2x or 5x)					
Electrode material	Lead (M)	Part Number	Qty/ Pkg	Part Number	Qty/ Pkg
Silver	1.0	1012O.100TP	10	1012Y.100TP	25
Silver	1.5	1012O.150TP	10	1012Y.150TP	25
Gold	1.0	1032O.100TP	10	1032Y.100TP	25
Gold	1.5	1032O.150TP	10	1032Y.150TP	25
Chloride	1.0	1022O.100TP	10	1022Y.100TP	25
Chloride	1.5	1022O.150TP	10	1022Y.150TP	25



12 or 24 electrodes per pkg					
Lead color: ●●●●●● (2x or 4x)					
Electrode material	Lead (M)	Part Number	Qty/ Pkg	Part Number	Qty/ Pkg
Silver	1.0	1012L.100TP	12	1012P.100TP	24
Silver	1.5	1012L.150TP	12	1012P.150TP	24
Gold	1.0	1032L.100TP	12	1032P.100TP	24
Gold	1.5	1032L.150TP	12	1032P.150TP	24
Chloride	1.0	1022L.100TP	12	1022P.100TP	24
Chloride	1.5	1022L.150TP	12	1022P.150TP	24

Also available as single color sets. Please let us know which color you prefer. Available colors: ●●●●●●

Need different length, volumes, OEM labeling including your own Logo?
 MFi offers customized products.

Durable* long lasting EEG disc electrodes in 6mm and 10mm cup size. Cup is available in Silver (Ag), Gold (Ag/Au**), Silver/Silver-Chloride (Ag/AgCl) and Tin (Sn).

Equipped with Kevlar reinforced lightweight Tinsel lead wires these electrodes are ideal for sleep registrations. Lead wires available in 6 different colours with a minimum length of 15cm and terminated to Touch Proof (DIN42802 style) connectors. **These electrodes are autoclavable.**

* MFi cast its own silver electrodes from 99,95% silver to ensure maximum quality. Cast electrodes last longer as stamped electrodes due to sturdy design.
 ** Plated with 5 microns 24 Karat gold.

10mm Cup electrodes, silicon lead, Touch Proof plugs (DIN42802)

10 or 25 electrodes per pkg					
Lead color: ●●●●● (2x or 5x)					
Electrode material	Lead (M)	Part Number	Qty/Pkg	Part Number	Qty/Pkg
Silver	1.0	1117O.100TP	10	1117Y.100TP	25
Silver	1.5	1117O.150TP	10	1117Y.150TP	25
Silver	2.0	1117O.200TP	10	1117Y.200TP	25
Gold	1.0	1137O.100TP	10	1137Y.100TP	25
Gold	1.5	1137O.150TP	10	1137Y.150TP	25
Gold	2.0	1137O.200TP	10	1137Y.200TP	25
Chloride	1.0	1127O.100TP	10	1127Y.100TP	25
Chloride	1.5	1127O.150TP	10	1127Y.150TP	25
Chloride	2.0	1127O.200TP	10	1127Y.200TP	25
Tin	1.0	1167O.100TP	10	1167Y.100TP	25
Tin	1.5	1167O.150TP	10	1167Y.150TP	25
Tin	2.0	1167O.200TP	10	1167Y.200TP	25

12 or 24 electrodes per pkg					
Lead color: ●●●●● (2x or 4x)					
Electrode material	Lead (M)	Part Number	Qty/Pkg	Part Number	Qty/Pkg
Silver	1.0	1117L.100TP	12	1117P.100TP	24
Silver	1.5	1117L.150TP	12	1117P.150TP	24
Silver	2.0	1117L.200TP	12	1117P.200TP	24
Gold	1.0	1137L.100TP	12	1137P.100TP	24
Gold	1.5	1137L.150TP	12	1137P.150TP	24
Gold	2.0	1137L.200TP	12	1137P.200TP	24
Chloride	1.0	1127L.100TP	12	1127P.100TP	24
Chloride	1.5	1127L.150TP	12	1127P.150TP	24
Chloride	2.0	1127L.200TP	12	1127P.200TP	24
Tin	1.0	1167L.100TP	12	1167P.100TP	24
Tin	1.5	1167L.150TP	12	1167P.150TP	24
Tin	2.0	1167L.200TP	12	1167P.200TP	24

Silver (Ag)



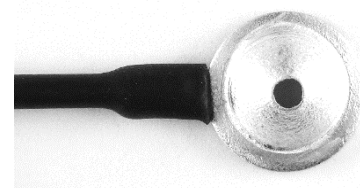
Gold (Ag/Au)



Silver-Chloride (Ag/AgCl)



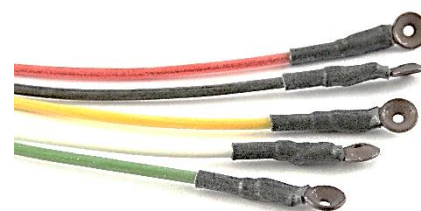
Pure tin (Sn)



6mm Cup electrodes, silicon lead, Touch Proof plugs (DIN42802)

10 or 25 electrodes per pkg					
Lead color: ●●●●● (2x or 5x)					
Electrode material	Lead (M)	Part Number	Qty/Pkg	Part Number	Qty/Pkg
Silver	1.0	1017O.100TP	10	1017Y.100TP	25
Silver	1.5	1017O.150TP	10	1017Y.150TP	25
Gold	1.0	1037O.100TP	10	1037Y.100TP	25
Gold	1.5	1037O.150TP	10	1037Y.150TP	25
Chloride	1.0	1027O.100TP	10	1027Y.100TP	25
Chloride	1.5	1027O.150TP	10	1027Y.150TP	25

12 or 24 electrodes per pkg					
Lead color: ●●●●● (2x or 4x)					
Electrode material	Lead (M)	Part Number	Qty/Pkg	Part Number	Qty/Pkg
Silver	1.0	1017L.100TP	12	1017P.100TP	24
Silver	1.5	1017L.150TP	12	1017P.150TP	24
Gold	1.0	1037L.100TP	12	1037P.100TP	24
Gold	1.5	1037L.150TP	12	1037P.150TP	24
Chloride	1.0	1027L.100TP	12	1027P.100TP	24
Chloride	1.5	1027L.150TP	12	1027P.150TP	24



Also available as single color sets. Please let us know which color you prefer. Available colors: ●●●●●

Need different length, volumes, OEM labeling including your own Logo? MFi offers customized products.

10mm Cup electrodes, silicon lead, Touch Proof plugs (DIN42802)

1 Pair / Lead color: ● ●					
Electrode material	Lead (M)	Silicon lead Part Number	Qty/ Pkg	Silicon lead Part Number	Qty/ Pkg
Silver	1.0	1312B.100TP	1	1317B.100TP	1
Silver	1.5	1312B.150TP	1	1317B.150TP	1
Gold	1.0	1332B.100TP	1	1337B.100TP	1
Gold	1.5	1332B.150TP	1	1337B.150TP	1
Chloride	1.0	1322B.100TP	1	1327B.100TP	1
Chloride	1.5	1322B.150TP	1	1327B.150TP	1
Tin	1.0	1362B.100TP	1	1367B.100TP	1
Tin	1.5	1362B.150TP	1	1367B.150TP	1

6mm Cup electrodes, silicon lead, Touch Proof plugs (DIN42802)

1 Pair / Lead color: ● ●					
Electrode material	Lead (M)	Silicon lead Part Number	Qty/ Pkg	Silicon lead Part Number	Qty/ Pkg
Silver	1.0	1212B.100TP	1	1217B.100TP	1
Silver	1.5	1212B.150TP	1	1217B.150TP	1
Gold	1.0	1232B.100TP	1	1237B.100TP	1
Gold	1.5	1232B.150TP	1	1237B.150TP	1
Chloride	1.0	1222B.100TP	1	1227B.100TP	1
Chloride	1.5	1222B.150TP	1	1227B.150TP	1



Chloride



Gold

Reusable Bio & Neuro feedback electrode

We offer re-usable electrodes for Bio/Neuro feedback applications.

Available electrode materials are:

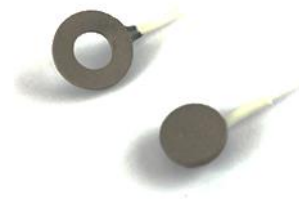
- **Gold or Silver 10mm flat disc electrodes**
- **Sintered DC Stable electrodes**

All electrodes with Tinsel or silicon leads (6 colors) at your desired length. Cables ends have a DIN42802 (Touch Proof/Safety) connector or a connector of your choice.

Contact MFI for more information about these electrodes and the possibilities we can offer to you.



10mm Gold plated flat electrode



Ag/AgCl sintered electrodes

For situations that require single use electrodes, we offer 10mm disposable EEG cup electrodes. Packed with 500 pieces in a, easy to use, re-sealable container.

These single use electrodes require separate cables to connect with your EEG recorder and are available in sets of 10 or 25 pieces in 3 standard lengths and 2 different materials (Silicon or Tinsel). Silicon cables are tangle free and used for daily routine use. Tinsel wires are advised for sleep recording due to the lightweight design.

Each cable has a Touch Proof (DIN42820 style) connector that fits to most EEG headboxes. The other side is terminated with a special plug to ensure that cables do not detach from the electrode during recordings.

Cables can be steam sterilized (Cables and electrodes are supplied non-sterile)

Disposable EEG electrode cups (without cable)

Electrode material	Part number	Qty/Pkg
10mm Disposable Ag/AgCl Cups	D-EEG-500	500



Cable set for disposable electrodes (without electrode)

Lead color: 2x or 5x ●●●●●					
Cable material	Lead (M)	Part Number	Qty/Pkg	Part Number	Qty/ Pkg
Silicon lead wire	1.0	TD02L.100TP	10	TD02Y.100TP	25
Silicon lead wire	1.5	TD02L.150TP	10	TD02Y.150TP	25
Silicon lead wire	2.0	TD02L.200TP	10	TD02Y.200TP	25
Silicon lead wire	1.0	TD02L.100TP	10	TD02Y.100TP	25
Silicon lead wire	1.5	TD02L.150TP	10	TD02Y.150TP	25
Silicon lead wire	2.0	TD02L.200TP	10	TD02Y.200TP	25
Tinsel lead wire	1.0	TD07L.100TP	10	TD07Y.100TP	25
Tinsel lead wire	1.5	TD07L.150TP	10	TD07Y.150TP	25
Tinsel lead wire	2.0	TD07L.200TP	10	TD07Y.200TP	25
Tinsel lead wire	1.0	TD07L.100TP	10	TD07Y.100TP	25
Tinsel lead wire	1.5	TD07L.150TP	10	TD07Y.150TP	25
Tinsel lead wire	2.0	TD07L.200TP	10	TD07Y.200TP	25

Also available as single color sets. Please let us know which color you prefer.
Available colors: ●●●●●



The **BrainWave EEG head cap** is without doubt one of the best caps on the market. Made of durable lightweight material, incorporating 4mm low profile, DC stable, **sintered Ag/AgCl** electrodes. All caps have 1.8M cable and can be terminated to any connector.

Increased comfort and fewer gel spilling due to the soft cups around electrodes that sits gently on top of skin. The inner lining prevents twisting of the fine wires and reduces signal artifacts. The supple and elastic wicking textile ensures comfortable (long term) recordings, easy cleaning and short drying time.

BrainWave caps are available in 15 sizes and can have up to 256 electrodes. All electrodes have labels with corresponding position at the cap for easy identification. We offer customized caps to meet your requirements.

Depending on your application you can select BrainWave caps with shielded or unshielded cables.

12 good reasons why to choose BrainWave caps:

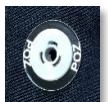
- 15 cap sizes, from “Preemies” up to Large (see overview next page)
- Layouts according International standards or customized
- All electrodes individual labelled for easy use
- 4mm low profile electrodes with comfortable cups
- 8 - 256 electrodes per cap, see table next page
- DC stable signals over long period, due to sintered Ag/AgCl electrodes
- Inner liner preventing wires tangling around and touching the skin
- Durable , easy to clean and fast drying fabric
- Easy to apply, up and running in only few minutes
- Compatible connectors to hook up with all EEG systems
- Noise cancelling lead wires reducing artefacts
- Short delivery times



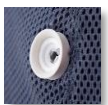
BrainWave cap

And not to forget our 12 Months 100% hassle-free warranty.

BrainWave electrode with label (outside view)



BrainWave electrode Ag/AgCl with soft cup (inside view)



Unshielded BrainWave caps have non-shielded cables (1.8M) and are ideal for daily routine recordings. The 25Pole D-SUB connector and pinning is compatible to most EEG systems and/or adapters.

Shielded BrainWave caps are used in combination with EEG recorders that have an active shielding. These caps are designed for the most demanding situations regarding signal quality. The tiny coaxial **low noise** wires have special noise reduction coating and reduce significantly the artifacts caused by the **Triboelectric** effect when cap is in motion.

Separate (customized) adapters are available to connect the BrainWave cap to any EEG recording system.

BrainWave EEG head cap size chart

Cap size	Size description	Head circumference Min. / Max.	Color Code*	Maximum # electrodes
L	Large	58 – 62	BLUE	256
L/M	Large-Medium	56 – 60**	BLUE/RED	128
M	Medium	54 – 58	RED	128
M/S	Medium-Small	52 – 56**	RED/YELLOW	128
S	Small	50 – 54	YELLOW	128
S-XS	Small-Extra small	48 – 52**	YELLOW/GREEN	64
XS	Extra small	46 – 50	GREEN	64
I3	Child	44 – 48	ORANGE	64
I2	Infant	40 – 44	GREY/ORANGE	64
I1	Baby	36 – 40	GREY	32
Neo 5	37-43 weeks	33 – 36	Text on cable	21
Neo 4	34-37 weeks	31 – 33	Text on cable	21
Neo 3	30-34 weeks	29 – 31	Text on cable	21
Neo 2	27-30 weeks	27 – 29	Text on cable	21
Neo 1	24-27 weeks	25 – 27	Text on cable	21

* Chin strap incorporates colored Velcro that correspond to above color code
** Intermediate sizes only advisable for high volume caps (64+)

BrainWave EEG head cap accessories

EEG

Adapter cables:

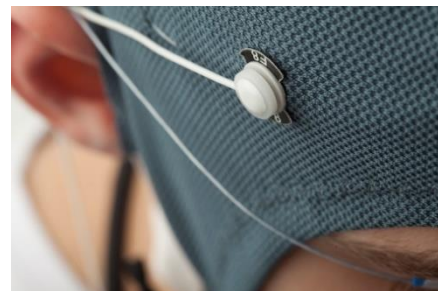
Adapter cables enable you to connect the BrainWave Cap to any EEG system available. Whether it's the worldwide accepted 25Pole D-SUB connector or a High Density (customized) connector.

Fast Fix electrode:

In the unlikely situation that a cable inside the cap is broken, MFI offers the Fast Fix electrode that replaces a faulty electrode. The fast Fix electrode is placed from the outside into the small injection hole of the faulty electrode.



Electrode Board Adapter (EBA) unshielded



Fast Fix electrode

Finger Ring Electrodes are made from high quality stainless-steel springs with an internal nylon thread to prevent stretching
 Available are:

Unshielded twisted silicon lead wires with Touch Proof plugs (Red/Black) or 5pin 240° DIN Plug
Shielded cable with Touch Proof (Red/Black/Green) or 5pin 240° DIN Plug

DIN Plugs with **reversed** polarity: (Positive = Pin 1 Negative = Pin 2)
 DIN Plugs with **standard** polarity: (Positive = Pin 2 Negative = Pin 1)

Shielded Ring electrode cable				
Part number	Cable	Cable length	Connector	Note:
5246A.060TP	Shielded	0.6M	Touch Proof	
5246A.100TP	Shielded	1.0M	Touch Proof	
5246A.100E0	Shielded	1.0M	5PIN DIN	Reversed polarity
5246A.150E0	Shielded	1.5M	5PIN DIN	Reversed polarity
5246A.100E1	Shielded	1.0M	5PIN DIN	Standard polarity
5246A.150E1	Shielded	1.5M	5PIN DIN	Standard polarity



Touch Proof or 5P DIN plug

Unshielded Ring electrode cable				
Part number	Cable	Cable length	Connector	Note:
5242A.100TP	Unshielded	1.0M	Touch Proof	
5242A.150TP	Unshielded	1.5M	Touch Proof	
5242A.100E0	Unshielded	1.0M	5PIN DIN	REV. POL
5242A.150E0	Unshielded	1.5M	5PIN DIN	REV. POL



Touch Proof or 5P DIN plug

What is reversed and standard polarity?:

Below you can see the difference between Standard and reversed polarity with 5P DIN conn

5PIN DIN plug (240°) configuration

Polarity overview:		
PIN	Standard	Reversed
1	POS (+)	NEG (-)
2	NEG (-)	POS (+)
3	Cable shield	
4	Cable shield	
5	Cable shield	

Front view

PIN 5 PIN 1

Bipolar felt bar electrode (Ag/AgCl) pitch at 20 or 40mm.
 Available with screened cable terminated to Touch Proof connectors (DIN42802) order 5Pin DIN Plug (240°)
 Supplied with soft Velcro strap (0.75M) and 10 felt inserts

Part number	Electrode center	Cable length	Connector	Note:
FB296.100E1	20mm	1.0M	5PIN DIN	Standard polarity
FB296.150E1	20mm	1.5M	5PIN DIN	Standard polarity
FB496.100E1	40mm	1.0M	5PIN DIN	Standard polarity
FB496.150E1	40mm	1.5M	5PIN DIN	Standard polarity
FB296.100TP	20mm	1.0M	Touch Proof	
FB296.150TP	20mm	1.5M	Touch Proof	
FB496.100TP	40mm	1.0M	Touch Proof	
FB496.150TP	40mm	1.5M	Touch Proof	



Replacement felt tips:	
RFB-10	Replacement felt insert (bar) 10/pkg
RFB-100	Replacement felt insert (bar) 100/pkg



Bipolar felt tip electrode (Stainless steel cup) pitch at 10, 20 or 25mm. Available with 1.8M screened cable terminated Touch Proof (DIN42802) or 5Pin DIN Plug (240°)
 Supplied with soft Velcro strap (0.75M) and 10 felt inserts

Part number	Electrode center	Electrode size Ø	Connector	Note:
FT196.180E1	10mm	3mm	5PIN DIN	Standard polarity
FT296.180E1	25mm	6mm	5PIN DIN	Standard polarity
FT396.180E1	30mm	6mm	5PIN DIN	Standard polarity
FT196.180TP	10mm	3mm	Touch Proof	
FT296.180TP	25mm	6mm	Touch Proof	
FT396.180TP	30mm	6mm	Touch Proof	



Replacement felt tips:	
RFTS-10	Replacement felt insert (Tip 3mm) 10/pkg
RFTS-100	Replacement felt insert (Tip 3mm) 100/pkg
RFT-10	Replacement felt insert (Tip 6.7mm) 10/pkg
RFT-100	Replacement felt insert (Tip 6.7mm) 100/pkg



EMG cup electrode

Part number	Electrode	Cable length	Connector	Note:
1B26A.100TP	Chloride	1.0M	Touch Proof	Red, Black, Green
1B26A.115E0	Chloride	1.15M	5PIN DIN	Standard polarity
1B26A.115E1	Chloride	1.15M	5PIN DIN	Standard polarity



Reusable Snap leads

MFI snap leads are compatible with all 4mm stud (metal/plastic) EMG electrodes and have Touch Proof connectors (DIN42802 style).

Below is a list of our standard version including shielded wires.

MFI snap cables intended use is only for EMG/EEG.



Lead & snap color: ●(1) ●(3) ●(4) ●(5) ●(6) ●(7)		
Silicon lead wire		
Part number	Cable length	Connector
H102*.050TP	0.50M	Touch Proof
H102*.100TP	1.0M	Touch Proof
H102*.150TP	1.5M	Touch Proof
H102*.175TP	1.75M	Touch Proof
H102*.200TP	2.0M	Touch Proof
H102*.250TP	2.5M	Touch Proof
(Replace * in part# with corresponding color# above)		

Lead & snap color: ●(1) ●(3) ●(4) ●(5) ●(6) ●(7)		
Coax lead wire		
Part number	Cable length	Connector
H105*.050F1	0.50M	Ucoax
H105*.100F1	1.0M	Ucoax
H105*.150F1	1.5M	Ucoax
H105*.175F1	1.75M	Ucoax
H105*.200F1	2.0M	Ucoax
H105*.250F1	2.5M	Ucoax
(Replace * in part# with corresponding color# above)		

Alligator cables touch proof plug

Part number	Length cable	Color	Connector
AC021.100TP	1.M	Black	Touch Proof
AC021.150TP	1.5M	Black	Touch Proof
AC021.200TP	2.0M	Black	Touch Proof
AC021.250TP	2.5M	Black	Touch Proof
AC023.100TP	1.M	Red	Touch Proof
AC023.150TP	1.5M	Red	Touch Proof
AC023.200TP	2.0M	Red	Touch Proof
AC023.250TP	2.5M	Red	Touch Proof
AC025.100TP	1.M	Green	Touch Proof
AC025.150TP	1.5M	Green	Touch Proof
AC025.200TP	2.0M	Green	Touch Proof
AC025.250TP	2.5M	Green	Touch Proof
AC027.100TP	1.M	White	Touch Proof
AC027.150TP	1.5M	White	Touch Proof
AC027.200TP	2.0M	White	Touch Proof
AC027.250TP	2.5M	White	Touch Proof



Alligator cables with 5Pole din connector

Part number	Length Cable	Connector	Note:
AC06D.150E1	1.5M	5PIN DIN	Standard polarity
AC06D.150E0	1.5M	5PIN DIN	Reversed polarity



Touch Proof extension cables (M/F)

Part number	Length cable	Color	Connector
CT021.100TP	1.0M	Black	Touch Proof
CT021.150TP	1.5M	Black	Touch Proof
CT023.100TP	1.0M	Red	Touch Proof
CT023.150TP	1.5M	Red	Touch Proof
CT025.100TP	1.0M	Green	Touch Proof
CT025.150TP	1.5M	Green	Touch Proof
CT027.100TP	1.0M	White	Touch Proof
CT027.150TP	1.5M	White	Touch Proof



MFI reusable electrode extension leads are with Touch Proof male/female connectors and flexible silicon lead wire.

Need different length, volumes, OEM labeling including your own Logo?
MFi offers customized products.

Tremor sensors

MFI tremor sensors are used to observe the smallest tremors at the skin surface of a human body. A delicate piezo element inside the tip of the sensor cable generates a signal at EEG level. These sensors do not require an external power supply and connect directly with any EEG socket (Touch Proof) of your patient head box. Depending on the tremor that needs to be recorded MFI offers two sizes: 20mm (MMS) or 8mm (PMS) long.

Micro Movement Sensor (MMS)

Ideal for the larger areas at the body. Easily taped to the skin by medical tape and ready to use.

Sensor size: app. 20 x 4mm
Typical application: Tremor at finger, limbs, chest, Snoring, respiration, etc.

Part number	Length Cable	Connector
MMS57.150TP	1.5M	Touch Proof (DIN42802)
MMS57.200TP	2.0M	Touch Proof (DIN42802)
MMS57.300TP	3.0M	Touch Proof (DIN42802)



MMS used as snoring sensor

Pico Movement Sensor (PMS)

Designed for the smaller areas at the body (finger top, eyelid, small chest, etc.). Taped to the skin with medical tape.

Sensor size: app. 8 x 3mm
Typical application: Tremor facial muscles, REM

Part number	Length Cable	Cable end
PMS57.150TP	1.5M	Touch Proof (DIN42802)
PMS57.200TP	2.0M	Touch Proof (DIN42802)
PMS57.300TP	3.0M	Touch Proof (DIN42802)



PMS to record REM

Technical specifications PMS/MMS:

Cable length: 1.5M, 2M or 3M, Low Noise cable
Connector: 2x Touch Proof Plug (Red/Black)
Freq range: 0.3 – 70Hz
Signal output: @ EEG level (app. 100µv/mm)

Warning:

These sensors are NOT designed for monitoring vital functions of the human body or for life support. Use professional monitoring devices instead.

A qualified employee must always be present when sensor is applied!

We design and manufacture custom-made cables, sensors and physiological electrodes for various applications in high and low volumes:

- EEG / ERG / EOG / GSR / EMG studies
- Special electrodes (EEG) for sleep studies
- Bio Feedback – Neuro Feedback
- Relaxation therapy
- Medical research

We have unique expertise in low-noise applications and can offer various versions of Tribo-cancelling cable. These cables are often used in research of the smallest signals, where disturbances must be kept to a minimum.

In combination with our in-house molding facility and cable design we can personalize your products.

All design and manufacturing is done by MFI under ISO13485:2016 Quality system.

Contact us for more information about what we can offer you regarding OEM manufacturing or look at our website www.mfi-bv.nl